

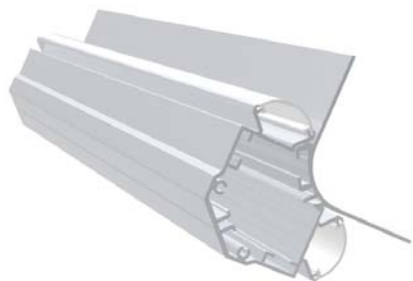
Specification

Architecture lighting integration series

LG7070

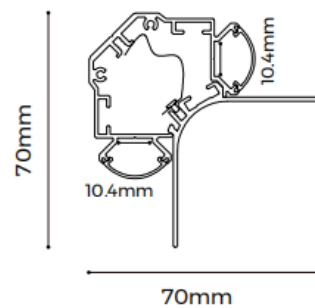


LG7070


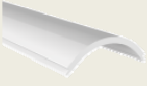



Features



- Apply to gypsum lines, integrated into architecture.
- Double light emitting, can be used for ceiling, wall lighting decoration effect.
- Arc cover design, wider luminous surface.
- Detachable clasp design, easy to install
- AL6063-T5 aluminum profile with high-quality surface treatment, white and silver are optional.



Standard Configuration

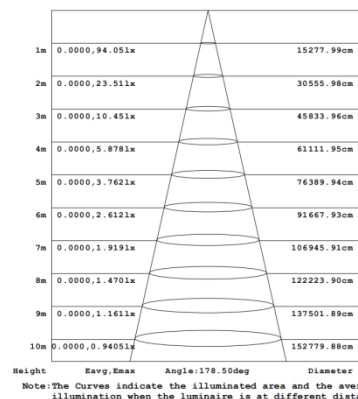
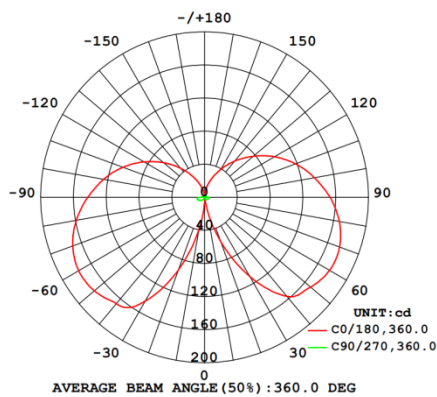
Picture	Item	Parameter
	Profile and pendant	Profile weight: 1.5kg/2.5m coverplate weight: 0.9kg/2.5m Profile Size: L2500*W44.9*H44.9mm coverplate Size: L2500*W49.4*H46.4mm Material: AL6063-T5 Surface processing: Anodizing
	Cover	Type: Frosted diffuser Material: PC Light transmittance: 70% Size: L2500*W18.9*H6.5mm PC Feature: The diffuser will extend (shrink) 0.8mm/m when the temperature rises (drops) 10°C.
	End caps	Size: L70*W70*H2mm Material: AL

Optional Accessories

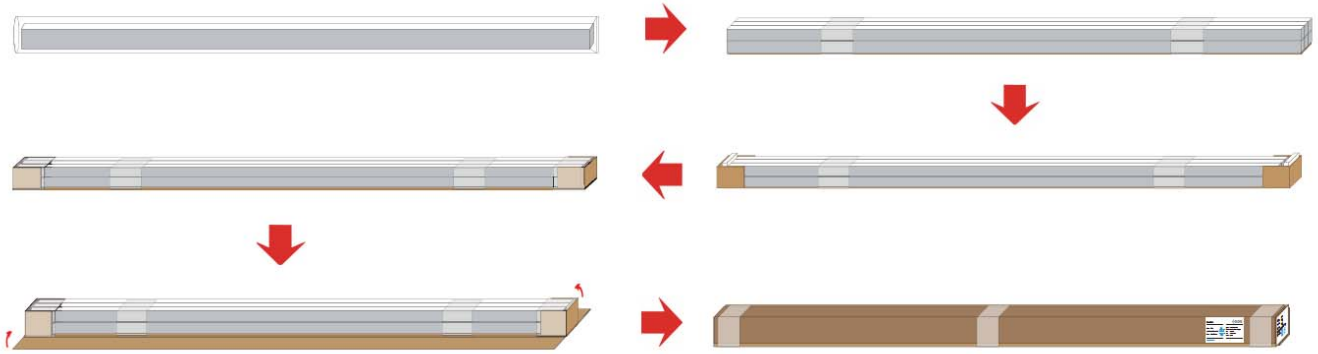
Picture	Item	Parameter
	Flexible strip D6140-24V-8mm	Material: FPC, CCT: 2700/3000/4000/6000K; Ra > 90; Voltage:24V; Power: 6.6W/m; Lumen: 710Lm/m; PCB width: 8mm; Minimum cut: 50mm;
	Screw	Size: M3.5*40mm Material: Carbon steel

Optical Parameter

(D6140-24V-8mm light source, frosted diffuser)



Package



Item	Type	Size(mm)	NW(kg)	GW(kg)	Content
Profile and cover	Packing box	2580*190*158mm	10.92	13.92	4pcs/box

